

## GLOBAL™

Vi har utvecklat vår egen serie av problemlösande, varje-dag-spolmunstycken. Konstruktionen bygger på vår samlade erfarenhet och vi kallar dem Global. Global har en enkel men effektiv flödesdesign för mindre turbulens. Detta tillsammans med strålningsvinkeln, bidrar till god dragkraft och god förmåga att förflytta massor.

### Global EMF

- Endast en framåtriktad vattenstråle.
- Används för att öppna upp ett stopp snabbt och enkelt och där indrivande strålar ej behövs.

### Global GR

- Endast med bakåtriktade vattenstrålar.
- Används vid enklare rengöring av ledning.

### Global MF

- En stråle i fronten samt bakåtspolning.
- Används för att ta upp stopp mm.

### Global IS

- Med tre strålar i front och bakåtspolning.
- Används för att ta upp stopp, isproppar, rörtryckning mm.



## GLOBAL™

We have developed our own line of trouble solving, every day nozzles, built on our collected know how through out the years. They are called the Global™ nozzles. The nozzles have a simple but effective flow design with the nozzle threaded to the top for less turbulence in the head of the nozzle. This results in, with the jet angles, good thrusting and debris moving power.

### Global Front™

- One large forward jet.
- For opening clogged pipes where no thrusting rear jets are needed.

### Global Ground™

- Thrusting rear jets.
- For general pipe cleaning only.

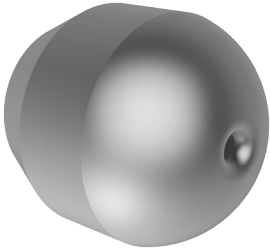
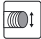







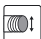





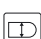

### Global Hit™

- Thrusting jets + one forward jet
- For penetrating clogged pipes

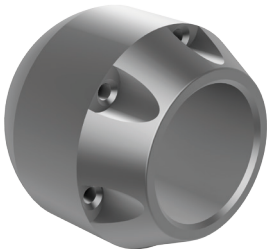
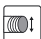







### Global Ice™

- Thrusting jets + three forward jets
- For penetrating clogged pipes, pipes with ice och hydraulic thrust boring

## GLOBAL EMF / GLOBAL FRONT™


	2-11105-25	2-11205-25	2-11305-35
	 1/4"	3/8"	1/2"
	 40-110 mm (2"-4")	40-150 mm (2"-6")	50-225 mm (2"-9")
	 35 l/min (10 US GPM)		50 l/min (13 US GPM)
	 300 bar / 4000 PSI		
	 -		
	 1 x 2,5 mm		1 x 3,5 mm
	 21 x 20 mm	26 x 25 mm	33 x 32 mm
	 0,1 kg		
	2-11405-50	2-11505-70	2-11605-70
	 3/4"	1"	1 1/4"
	 75-300 mm (3"-12")	100-400 mm (4"-16")	
	 100 l/min (25 US GPM)	200 l/min (50 US GPM)	
	 200 bar / 3000 PSI	150 bar (2000 PSI)	
	 -		
	 1 x 5,0 mm	1 x 7,0 mm	
	 43 x 40 mm	51 x 50 mm	65 x 63 mm
	 0,2 kg	0,4 kg	0,8 kg

## GLOBAL GR / GLOBAL GROUND™

	2-11110-06	2-11110-07	2-11110-10	2-11110-125
	 1/4"			
	 40-110 mm (2"-4")			
	 8 l/min (2 US GPM)	10 l/min (3 US GPM)	20 l/min (5 US GPM)	35 l/min (9 US GPM)
	 300 bar / 4000 PSI			
	 4 x 0,6 mm	4 x 0,7 mm	4 x 1,0 mm	4 x 1,25 mm
	 -	-	-	-
	 21 x 20 mm			
	 0,1 kg			

 Anslutning  
Connection


 Vattenflöde vid 100 bar  
Water flow at 1450 PSI

 För recycler  
For recyclers

 Främre dysor  
Front jets

 Vikt  
Weight

 Rördimension  
Pipe dimension

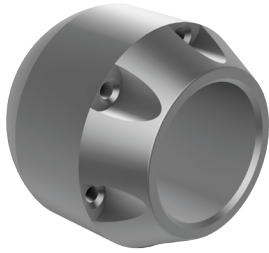
 Max arbetstryck  
Max. working pressure

 Bakre dysor  
Rear jets

 Längd x Diameter  
Length x Diameter

 Övrig information  
Other information

# GLOBAL GR / GLOBAL GROUND™



	2-11210-07	2-11210-11	2-11210-15
	3/8"		
	40-150 mm (2"-6")		
	10 l/min (3 US GPM)	25 l/min (7 US GPM)	50 l/min (13 US GPM)
	300 bar / 4000 PSI		
	4 x 0,7 mm	4 x 1,1 mm	4 x 1,5 mm
	-	-	-
	26 x 25 mm		
	0,1 kg		
	2-11310-17	2-11310-20	2-11310-20S6
	1/2"		
	50-225 mm (2"-9")		
	60 l/min (15 US GPM)	85 l/min (22 US GPM)	120 l/min (32 US GPM)
	300 bar (4000 PSI)		
	4 x 1,7 mm	4 x 2,0 mm	6 x 2,0 mm
	-	-	-
	33 x 32 mm		
	0,1 kg		
	2-11410-20	2-11410-24	
	3/4"		
	75-300 mm (3"-12")		
	120 l/min (32 US GPM)	180 l/min (48 US GPM)	
	200 bar (3000 PSI)		
	6 x 2,0 mm	6 x 2,4 mm	
	-	-	
	43 x 40 mm		
	0,2 kg		

Anslutning  
Connection

Vattenflöde vid 100 bar  
Water flow at 1450 PSI

För recycler  
For recyclers

Främre dysor  
Front jets

Vikt  
Weight

Rördimension  
Pipe dimension

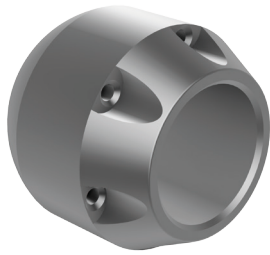
Max arbetstryck  
Max. working pressure

Bakre dysor  
Rear jets

Längd x Diameter  
Length x Diameter

Övrig information  
Other information

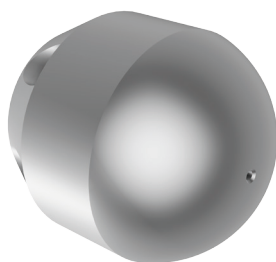
## GLOBAL GR / GLOBAL GROUND™



	2-11510-27	2-11510-30	2-11510-35
	1"		
	100-400 mm (4"-16")		
	215 l/min (57 US GPM)	270 l/min (70 US GPM)	360 l/min (95 US GPM)
	150 bar / 2000 PSI		
	6 x 2,7 mm	6 x 3,0 mm	6 x 3,5 mm
	-	-	-
	52 x 50 mm		
	0,4 kg		

	2-11610-30	2-11610-35
	1 1/4"	
	100-400 mm (4"-16")	
	270 l/min (70 US GPM)	360 l/min (95 US GPM)
	150 bar (2000 PSI)	
	6 x 3,0 mm	6 x 3,5 mm
	-	-
	65 x 63 mm	
	0,7 kg	

## GLOBAL MF / GLOBAL HIT™



	2-11120-06	2-11120-07	2-11120-08	2-11120-10
	1/4"			
	40-110 mm (2"-4")			
	10 l/min (3 US GPM)	12 l/min (3 US GPM)	15 l/min (4 US GPM)	25 l/min (6 US GPM)
	300 bar / 4000 PSI			
	4 x 0,6 mm	4 x 0,7 mm	4 x 0,8 mm	4 x 1,0 mm
	1 x 0,6 mm	1 x 0,7 mm	1 x 0,8 mm	1 x 0,8 mm
	21 x 20 mm			
	0,1 kg			

Anslutning  
Connection

Vattenflöde vid 100 bar  
Water flow at 1450 PSI

För recycler  
For recyclers

Främre dysor  
Front jets

Vikt  
Weight

Rördimension  
Pipe dimension

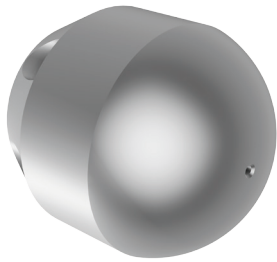
Max arbetstryck  
Max. working pressure

Bakre dysor  
Rear jets

Längd x Diameter  
Length x Diameter

Övrig information  
Other information

# GLOBAL MF / GLOBAL HIT™



	2-11120-125	2-11120-15		
	¼"			
	40-110 mm (2"-4")			
	35 l/min (10 US GPM)	45 l/min (12 US GPM)		
	300 bar / 4000 PSI			
	4 x 1,25 mm	4 x 1,5 mm		
	1 x 0,8 mm	1 x 0,8 mm		
	21 x 20 mm			
	0,1 kg			
	<b>2-11220-06</b>	<b>2-11220-07</b>	<b>2-11220-11</b>	<b>2-11220-15</b>
	⅜"			
	40-150 mm (2"-6")			
	10 l/min (3 US GPM)	12 l/min (3 US GPM)	35 l/min (10 US GPM)	45 l/min (12 US GPM)
	300 bar (4000 PSI)			
	4 x 0,6 mm	4 x 0,7 mm	4 x 1,1 mm	4 x 1,5 mm
	1 x 0,6 mm	1 x 0,7 mm	1 x 0,8 mm	1 x 0,8 mm
	26 x 25 mm			
	0,1 kg			
	<b>2-11320-17</b>	<b>2-11320-20</b>	<b>2-11320-20S6</b>	
	½"			
	50-225 mm (2"-9")			
	65 l/min (17 US GPM)	90 l/min (24 US GPM)	130 l/min (35 US GPM)	
	300 bar (4000 PSI)			
	4 x 1,7 mm	4 x 2,0 mm	6 x 2,0 mm	
	1 x 1,0 mm	1 x 1,0 mm	1 x 1,0 mm	
	33 x 32 mm			
	0,1 kg			

Anslutning  
Connection

Vattenflöde vid 100 bar  
Water flow at 1450 PSI

För recycler  
For recyclers

Främre dysor  
Front jets

Vikt  
Weight

Rördimension  
Pipe dimension

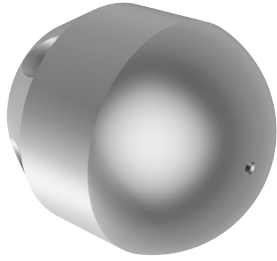
Max arbetstryck  
Max. working pressure

Bakre dysor  
Rear jets

Längd x Diameter  
Length x Diameter

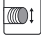

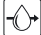





Övrig information  
Other information

# GLOBAL MF / GLOBAL HIT™



## 2-11420-20

## 2-11420-24

	¾"	
	75-300 mm (3"-12")	
	135 l/min (35 US GPM)	190 l/min (50 US GPM)
	200 bar / 3000 PSI	
	6 x 2,0 mm	6 x 2,4 mm
	1 x 1,5 mm	1 x 1,5 mm
	43 x 40 mm	
	0,2 kg	

## 2-11520-27



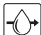





## 2-11520-30

## 2-11520-35

	1"		
	100-400 mm (4"-16")		
	230 l/min (60 US GPM)	290 l/min (75 US GPM)	380 l/min (100 US GPM)
	150 bar (2000 PSI)		
	6 x 2,7 mm	6 x 3,0 mm	6 x 3,5 mm
	1 x 2,0 mm	1 x 2,0 mm	1 x 2,0 mm
	52 x 50 mm		
	0,4 kg		

## 2-11620-30

## 2-11620-35

	1¼"	
	100-400 mm (4"-16")	
	290 l/min (75 US GPM)	380 l/min (100 US GPM)
	150 bar (2000 PSI)	
	6 x 3,0 mm	6 x 3,5 mm
	1 x 2,0 mm	1 x 2,0 mm
	65 x 63 mm	
	0,7 kg	



Anslutning  
Connection



Vattenflöde vid 100 bar  
Water flow at 1450 PSI



För recycler  
For recyclers



Främre dysor  
Front jets



Vikt  
Weight



Rördimension  
Pipe dimension



Max arbetstryck  
Max. working pressure



Bakre dysor  
Rear jets



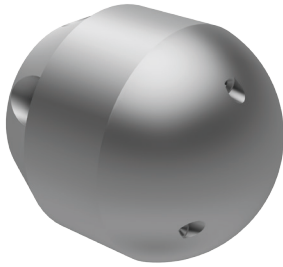
Längd x Diameter  
Length x Diameter



Övrig information  
Other information

# GLOBAL IS / GLOBAL ICE™

## 2-11140-11



	¼"
	40-110 mm (2"-4")
	30 l/min (8 US GPM)
	300 bar / 4000 PSI
	4 x 1,1 mm
	3 x 0,6 mm
	21 x 20 mm
	0,1 kg



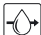





## 2-11240-15

	⅜"
	40-150 mm (2"-6")
	45 l/min (12 US GPM)
	300 bar / 4000 PSI
	4 x 1,5 mm
	3 x 0,7 mm
	26 x 25 mm
	0,1 kg

## 2-11340-17

## 2-11340-20

## 2-11340-20S6

	½"		
	50-225 mm (2"-9")		
	75 l/min (20 US GPM)	100 l/min (25 US GPM)	140 l/min (37 US GPM)
	300 bar (4000 PSI)		
	4 x 1,7 mm	4 x 2,0 mm	6 x 2,0 mm
	3 x 1,0 mm	3 x 1,0 mm	3 x 1,0 mm
	33 x 32 mm		
	0,1 kg		

 Anslutning  
Connection


 Vattenflöde vid 100 bar  
Water flow at 1450 PSI

 För recycler  
For recyclers

 Främre dysor  
Front jets

 Vikt  
Weight

 Rördimension  
Pipe dimension

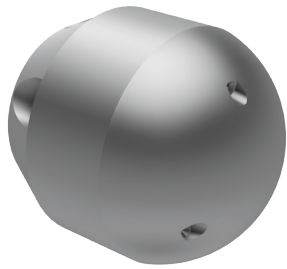
 Max arbetstryck  
Max. working pressure

 Bakre dysor  
Rear jets

 Längd x Diameter  
Length x Diameter

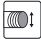





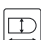

 Övrig information  
Other information

# GLOBAL IS / GLOBAL ICE™



## 2-11440-19





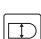

## 2-11440-24

	¾"	
	75-300 mm (3"-12")	
	125 l/min (33 US GPM)	190 l/min (50 US GPM)
	200 bar / 3000 PSI	
	6 x 1,9 mm	6 x 2,4 mm
	3 x 1,0 mm	3 x 1,0 mm
	43 x 40 mm	
	0,2 kg	

## 2-11540-27

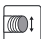





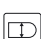

## 2-11540-30

## 2-11540-35

	1"		
	100-400 mm (4"-16")		
	265 l/min (70 US GPM)	300 l/min (80 US GPM)	390 l/min (100 US GPM)
	150 bar (2000 PSI)		
	6 x 2,7 mm	6 x 3,0 mm	6 x 3,5 mm
	3 x 1,5 mm	3 x 1,5 mm	3 x 1,5 mm
	52 x 50 mm		
	0,4 kg		

## 2-11640-30

## 2-11640-35

	1¼"	
	100-400 mm (4"-16")	
	340 l/min (90 US GPM)	390 l/min (100 US GPM)
	150 bar (2000 PSI)	
	6 x 3,0 mm	6 x 3,5 mm
	3 x 1,5 mm	3 x 1,5 mm
	65 x 63 mm	
	0,7 kg	

 Anslutning  
Connection

 Vattenflöde vid 100 bar  
Water flow at 1450 PSI

 För recycler  
For recyclers

 Främre dysor  
Front jets

 Vikt  
Weight

 Rördimension  
Pipe dimension

 Max arbetstryck  
Max. working pressure

 Bakre dysor  
Rear jets

 Längd x Diameter  
Length x Diameter

 Övrig information  
Other information